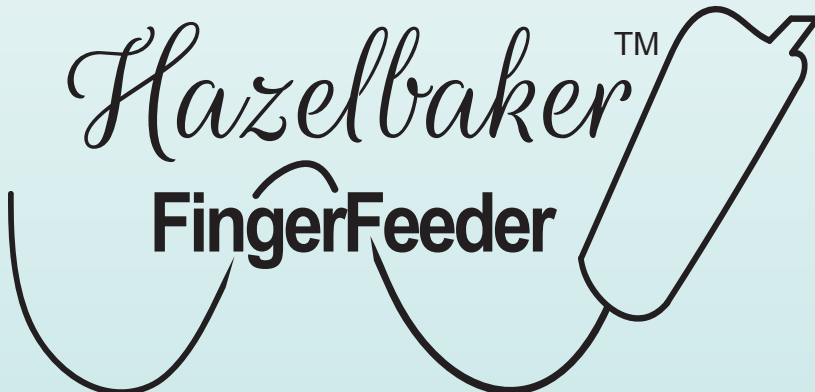




HazelbakerTM FingerFeeder

The title "HazelbakerTM FingerFeeder" is centered on the page. The word "Hazelbaker" is in a large, elegant cursive script, while "FingerFeeder" is in a bold, sans-serif font. To the right of the text is a simple line drawing of a fingerfeeder, which is a long, tapered, teardrop-shaped device with a small notch at the top. Below the text and drawing are two large, decorative, curved lines that sweep across the width of the title.

Instructions & Assembly

CAUTION: The Hazelbaker™ FingerFeeder was developed to assist you and your baby with breastfeeding, and to help get the baby on the breast. Read this manual carefully, it contains information you need to know to successfully use the Hazelbaker™ FingerFeeder. After the second or third day of delivery, you should look for indications that feeding is off to a good start. **If your baby is not gaining weight, loses weight, or has fewer than 2 bowel movements and 6-8 wet diapers every 24 hours, contact your physician immediately.** Consult with your health care professional regarding your baby's progress throughout the time you use your FingerFeeder.

YOUR DOCTOR: Your physician or other primary health care provider should know that you are using the Hazelbaker™ FingerFeeder so that he/she can provide you with the best possible care. If you are not using expressed breast milk, follow your physician's recommendations regarding the type of supplement to use, how much to use, and any other suggestions they may have.

Cleaning Instructions

After each use:

1. Remove Cap, fill Bulb full of warm soapy water, replace Cap and force water through Tubing by gently squeezing the Bulb.
2. Remove Cap, refill with clean water, replace Cap and again, gently squeeze the Bulb to force water through the Tubing.
3. Completely disassemble the FingerFeeder and clean all parts (except Tape) with warm soapy water.
4. Rinse parts well and allow to air dry on a clean towel. (It may help to reassemble the device and gently squeeze the empty Bulb a few times to remove water droplets from the Tubing).

Once per day:

This device may be sterilized or sanitized by using the following instructions.

Sterilization:

All disassembled parts can be autoclaved to a maximum of 272° for 3 minutes at 29 PSIG or 250° F for 15 minutes at 15 PSIG.

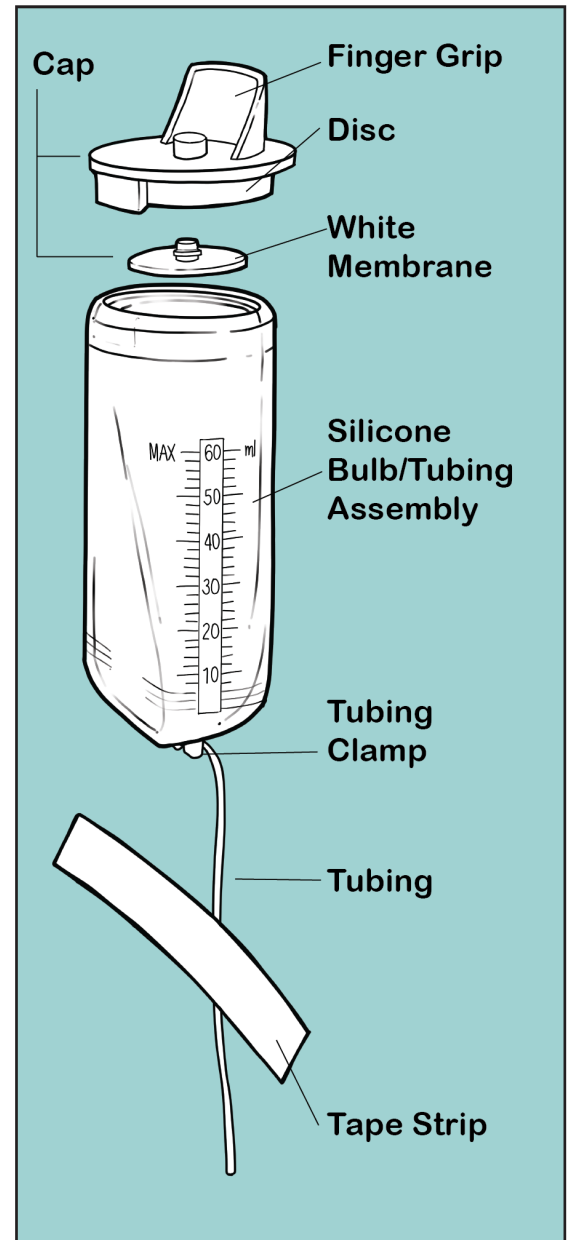
To avoid damage during and immediately after sterilization:

- Sterilize without applying external pressure on parts.
- Allow parts to cool before applying external pressure.

If gas sterilization is used, residual testing is recommended to determine the proper length of aeration.

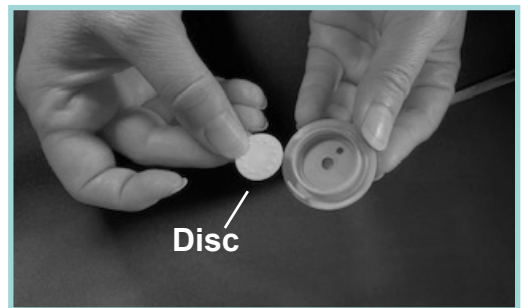
Sanitization:

- Place parts in a 4-5 quart pan.
- Fill to within 1 inch of rim with cold water. Distilled water is preferred, to reduce hard water deposit formation.
- Cover pan and bring water to a boil.
- Boil parts for 20 minutes.
- Remove pan from heat.
- Drain water and allow parts to cool in open pan.
- Remove all parts and allow to air dry on a clean towel.
- Avoid touching the inside of the Bulb.



Assembly Instructions

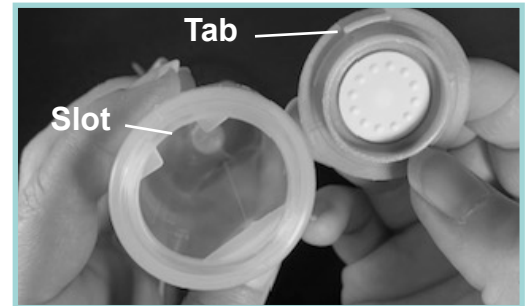
1. Wash your hands thoroughly in warm soapy water. Healthcare professionals should wear a glove or finger cot while feeding a baby with this device. (It may not be necessary for baby's parents to wear a glove or cot).
2. Insert the Tubing Clamp into the recess on the Tubing end of the Bulb. The slit in the Tubing Clamp should be positioned so the Tubing may be gently pulled up straight through the slit. Avoid pulling with too much force to prevent damaging tubing.
3. Gently pull the Tubing into the slit of the Tubing Clamp to prevent milk flow.
4. From the side of the Disc opposite the Finger Grip, push the stem of the White Membrane all the way through the small opening until the White Membrane is flush with the Disc.
5. Hold the Bulb in a vertical position with the large opening facing upward. Fill the Bulb with the amount of supplement the baby needs. **Do not fill the Bulb past the 60 ml mark.**



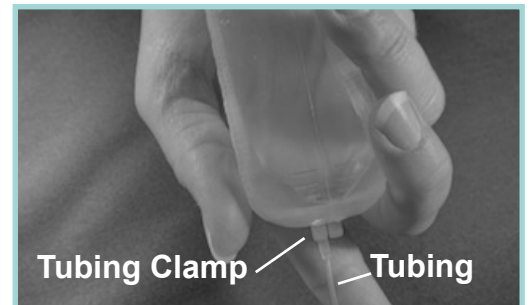
Assembly Instructions Cont.

The temperature of the supplement should be between room and body temperature before pouring the Bulb. This will allow the supplement to flow more freely through the Tubing. To warm cold breast milk, place in container in a bath of lukewarm water. Never microwave or boil breast milk.

6. Insert the Disc/Membrane assembly into the large opening of the Bulb, with the Membrane side inside the Bulb. Align the small tab on the Disc/Membrane assembly within the slot on the inside of the large opening of the Bulb.



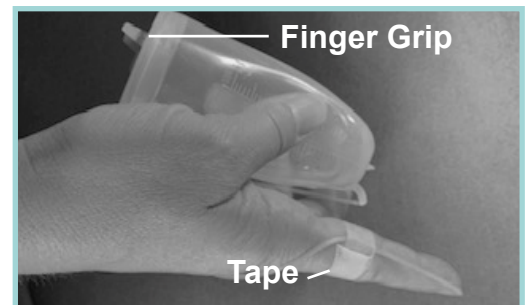
7. Place the Bulb in the palm of the hand. Position the Tubing-to-Bulb junction between the Tubing Clamp and the palm of the hand. This will allow less air to get into the tubing and the baby.



8. Place Tubing along the palm side of your finger. Position the end of the Tubing even with the end of your finger. To prevent tape from getting into the baby's mouth, secure the Tubing to your finger by taping it between the 1st and 2nd knuckle from your palm. This will ensure baby does not take the tape into its mouth.



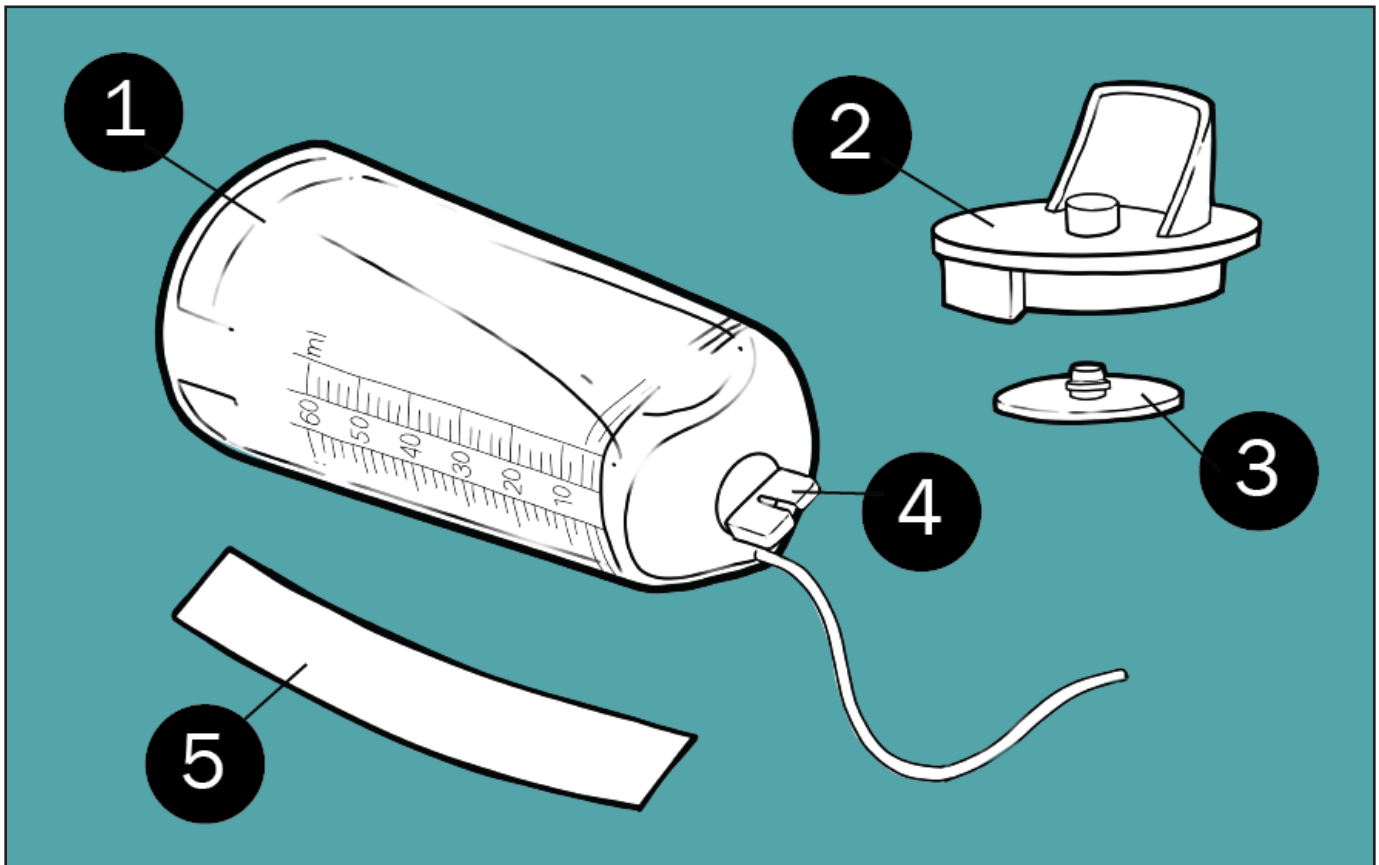
9. Release the Tubing from the Tubing Clamp and prime the system by gently squeezing on the Bulb. This will cause the Tubing to fill with supplement and prevent baby from swallowing air.



Instructions for Use

1. Position yourself and baby in a proper finger feeding position, such as shown in the drawing. Placing a pillow under baby will make feeding more comfortable for both of you, by raising baby to chest height.
2. Keep your shoulders and elbows down and relaxed to reduce muscle strain.
3. Gently tickle baby's lips in a vertical direction (from chin to nose and back) with the tip of the finger of the hand holding the FingerFeeder. Keep tickling until baby opens mouth wide.
4. When baby opens wide, quickly and gently insert your finger into baby's mouth, finger pad facing up. Rest your finger pad on the hard palate just behind the upper gum.
5. As baby sucks, gradually move your finger back to the juncture of the hard and soft palate. While moving the finger back, keep the pad in contact with the hard palate. Keep your finger pad resting up against the hard palate during the entire feed. (If your finger goes too far back or drops down on baby's tongue, baby may gag.)
6. Keep your finger in the same position and stationary. Do not apply pressure to baby's palate or tongue, or move your finger in and out of baby's mouth during the feed, unless specifically directed to do so by your health professional.
7. There is usually no need to squeeze the Bulb unless your health care provider has given you specific instructions to do so. Allow baby to set the pace – just let the Bulb rest in your hand. Never squeeze the FingerFeeder hard enough to cause milk to leak out of the baby's mouth, or cause baby to gag, cough or sputter.





Hazelbaker™ FingerFeeder

Item

1. Bulb Assembly
2. Valve Disc
3. Valve Membrane
4. Tubing Clamp
5. Hypoallergenic Tape

CALL FOR PRICING (614) 451-1154



Aidan & Éva llc, 5115 Olentangy River Road, Columbus, OH 43235

Phone: 1-614-451-1154

Hazelbaker is a trademark of Alison Hazelbaker.
Aidan & Éva is a registered trademark of Aidan & Éva llc.
Patent No. D392038